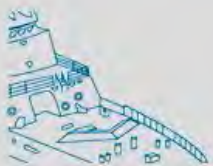




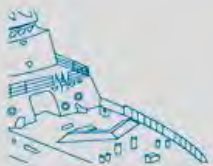
CONGRESO INTERNACIONAL DE
IV DISEÑO E
INGENIERÍA
NAVAL

11 - 13 DE MARZO DE 2015

Seastead floating city. Innovative development of a new model of offshore city.



- 1. Introduction**
- 2. Memories**
- 3. Development**
- 4. Results**
- 5. Conclusions**



Introduction

MEMORIES

- Floating habitat investigation
 - History (lake cities, big cities built on water, futur projects, utopic cities,
- Conclusion
- Entrepreneur (Seasteading) Ecomonic model

DEVELOPMENT

- Methodology
- Requirements identification
- Study design restriction
- Definition of typological volumes
- Internal functional analysis

RESULTS

- Re Settings
- Desing of housing typologies

CONCLUSIONS



Memories

Middle Age Bridges

- Hotel Dieu Bridge, Paris 1499
- Pont Vecchio, Florence 1345
- Rialto , Venise 1588



Inle lake, Birmanie

Since 1359 by Intha (Tiberio Burman)

Surface area: 44,9 ft² / 116 km²

Average depth: 4 to 12 ft/ 1,5 m to 3,7m

- Self-sufficient farmers
- Lot of small village around

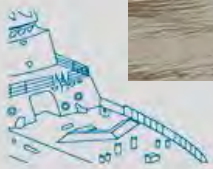


Village Kompong Phluk, Tonle Sap. Cambodia

Surface Area: 1000 ft² / 2700 km²

Ecological hot spot 1997 by Unesco

- 1,5 million resident approx
- Large Fresh water
- Fishing industry



Ganvie, Benin

Established XVI y XVII

20000 people, the largest lake villa in Africa

- Fish farming
- UNESCO world heritage, 1996.

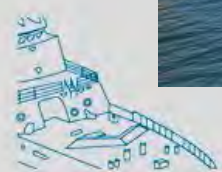


Titicaca lake, Peru

Created begin of XXI

Uros community, lives in Puno Bay

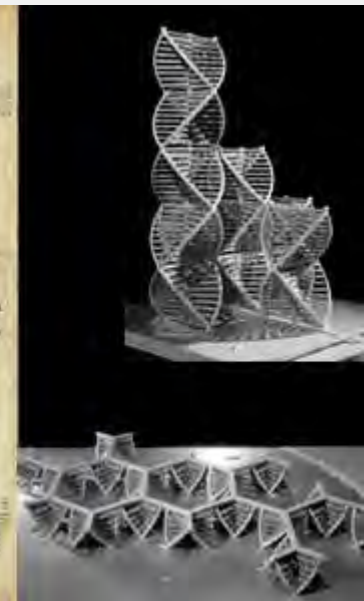
- Floating island created by Typha
- Open kitchen
- Bird and guinea pig breeding center



**Sea city 1971 by
Hal Moggridge for
Pilkington Glass Company**



**Helix city 1961 by
Kisho Kurokawa. Japan**

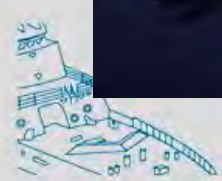


Palm Jumeirah, United Arab Emirates

Created in 2005

The greenstart by Waterstudio

LilyPad by Vincent Callebaut





Galethée by Jacques Rougerie

1977, underwater house

Turbine city, Norway by On Office

Area: 31500 m²/ 339000 ft²

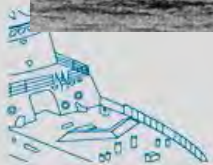
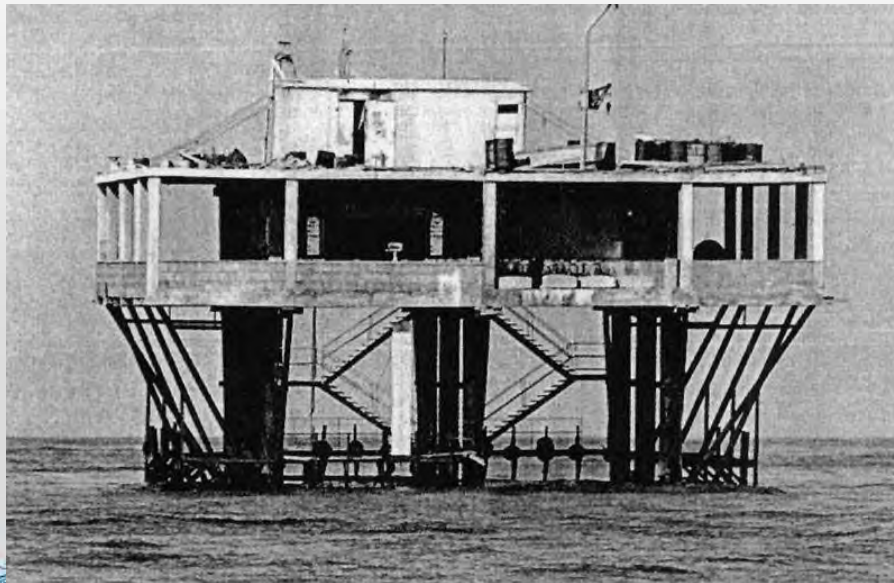
49 Turbines, each rated at 8 MW

Sustainable energy



Republic of Rose Island “ l’Isola delle Rose” or “ Insulo de la Rozoj”

- Built by Giorgio Rosa and declared 24 June 1968
- Micronation, placed in the Adriatic Sea
- 6,8 MN / 11 Km from coast of Rimini
- 400 m² 4300 ft²
- 13 February 1969 the italian navy destroy the platform with explosive.



REM Island (Reclame Exploitatie Maatschappij / Advertisinf exploitation company)

- Built in the republic of Ireland in 1964
- Pirate broadcasting star on August 1964
- On 12 december 1964 they ended broadcasting
- One year later they became TROS to 8 june 2006.
- (Televisie Radio Omroep Stichting)



Fort roughs SEALAND

- Dimension: 51 x 27 m / 168 x 88 ft
- 2 columns : 18 m / 60 ft tall, 7,3 m / 24 ft diameter, 9 cm / 3,5 inches thick, 4500 Ton
- One of the naval fort to the World War II
- Located 11 km from Suffolk
- Built in 1942 and occupied since 1967



DEVELOPMENT

Functional requirements	
Accommodation	400 people in about 300 ft ²
	75% people in about 600 ft ² to 2 person.
	25% people in about 900 to 1200 ft ² to 3 or 4 person.
	40 guest in spaces 120 to 180 ft ² per person.
	10 crew people in simple private spaces
Public Areas	2 levels combining interior area of less than 100000 ft ²
Service spaces	Reception
Commercial spaces	Stores
	Supermarket
	Coffee shop and restaurant
Structural requirement	
Static load	> 94 pounds ft ² internal spaces
	Considering accumulation of ice snow or water covers
Equipment and safety requirements	
	Accommodation Sikorsky-61 helicopter
	Compliance with fire codes, alarms
	Bridge command and control
	Spring for receipt of vessels and recreational space

Study design restrictions

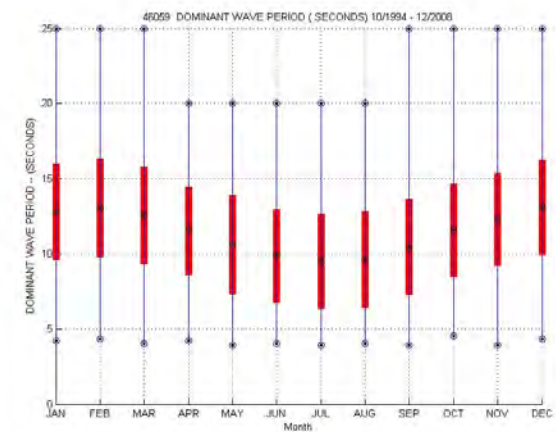
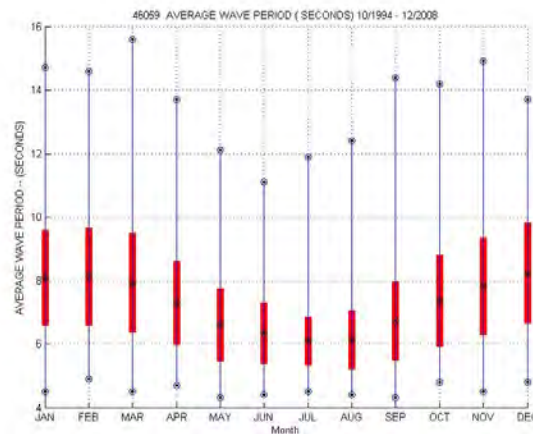
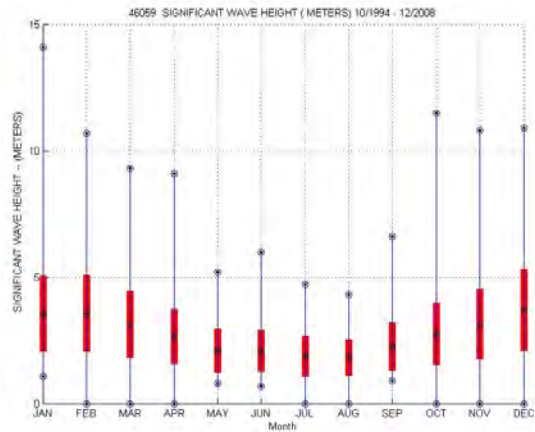
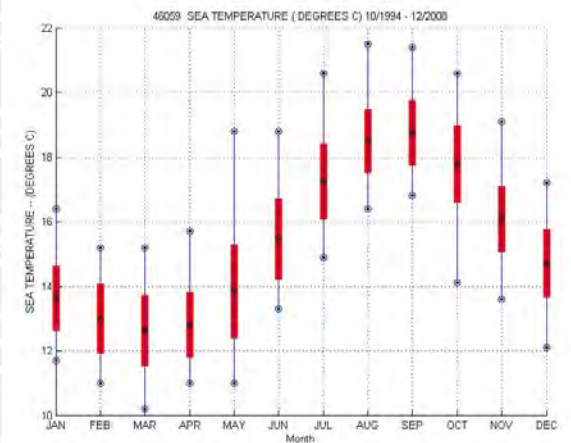
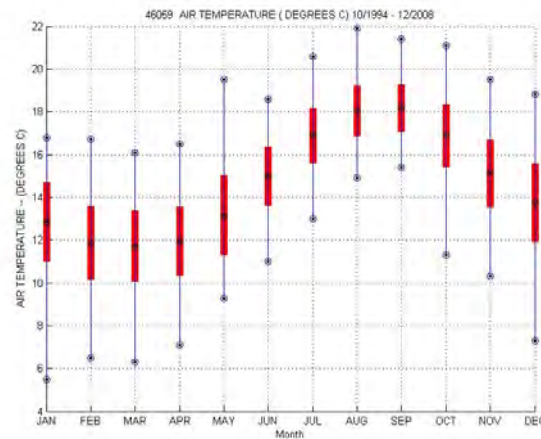
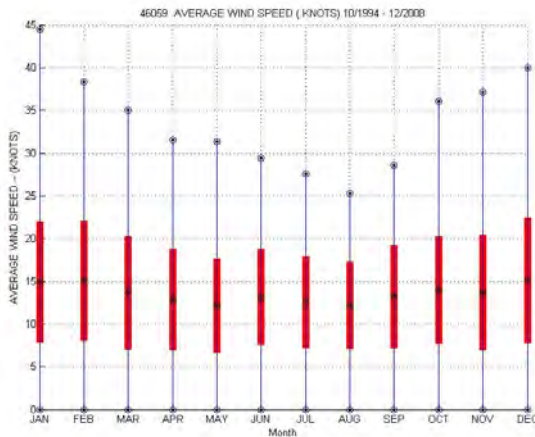
Location



Far than 200 MN from the coast

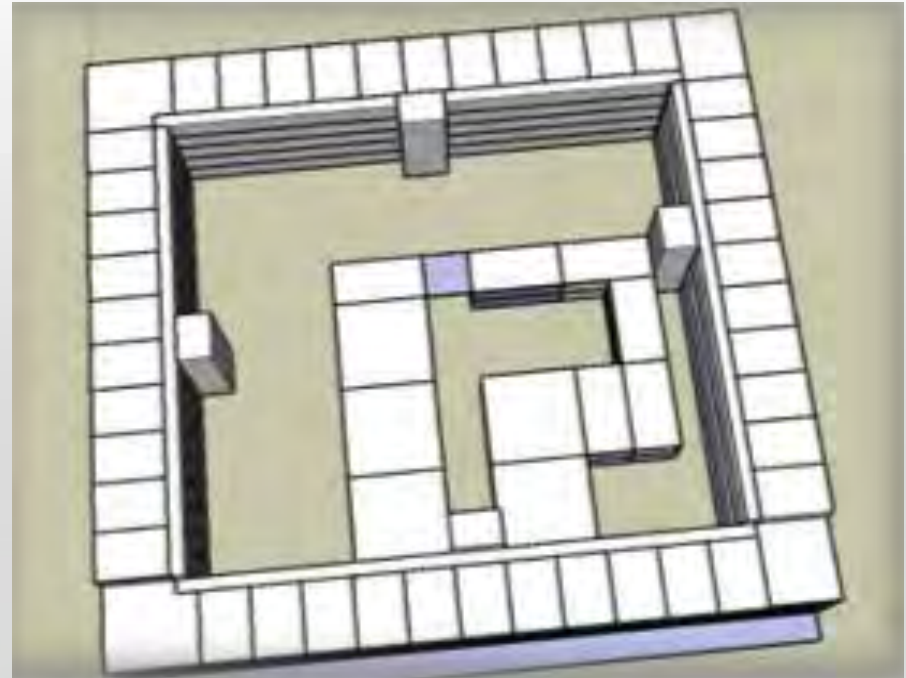
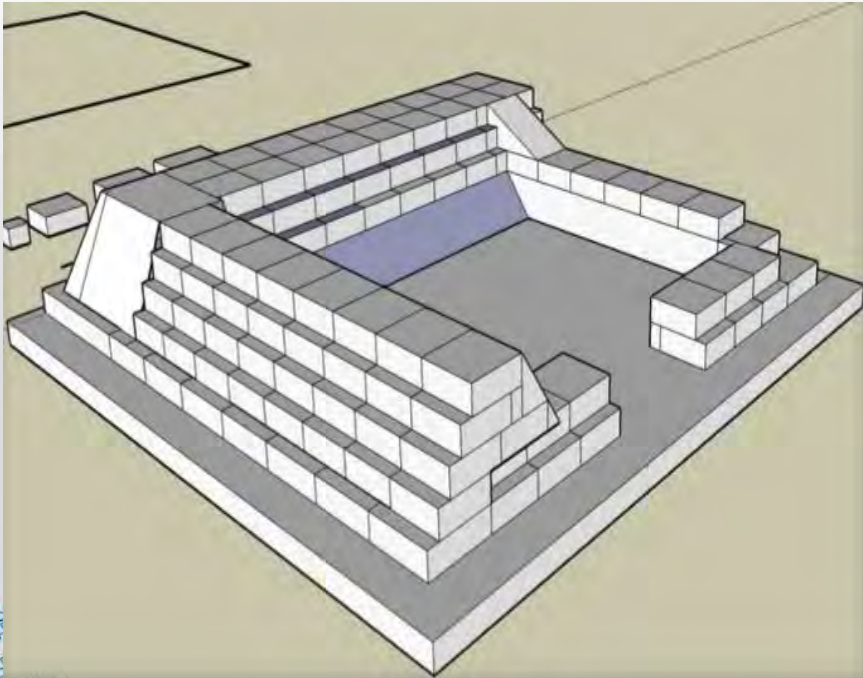
Conditions

Station 46059 by NOAA (National Oceanic and Atmospheric Administration)

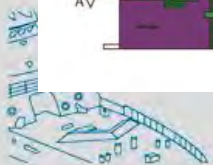
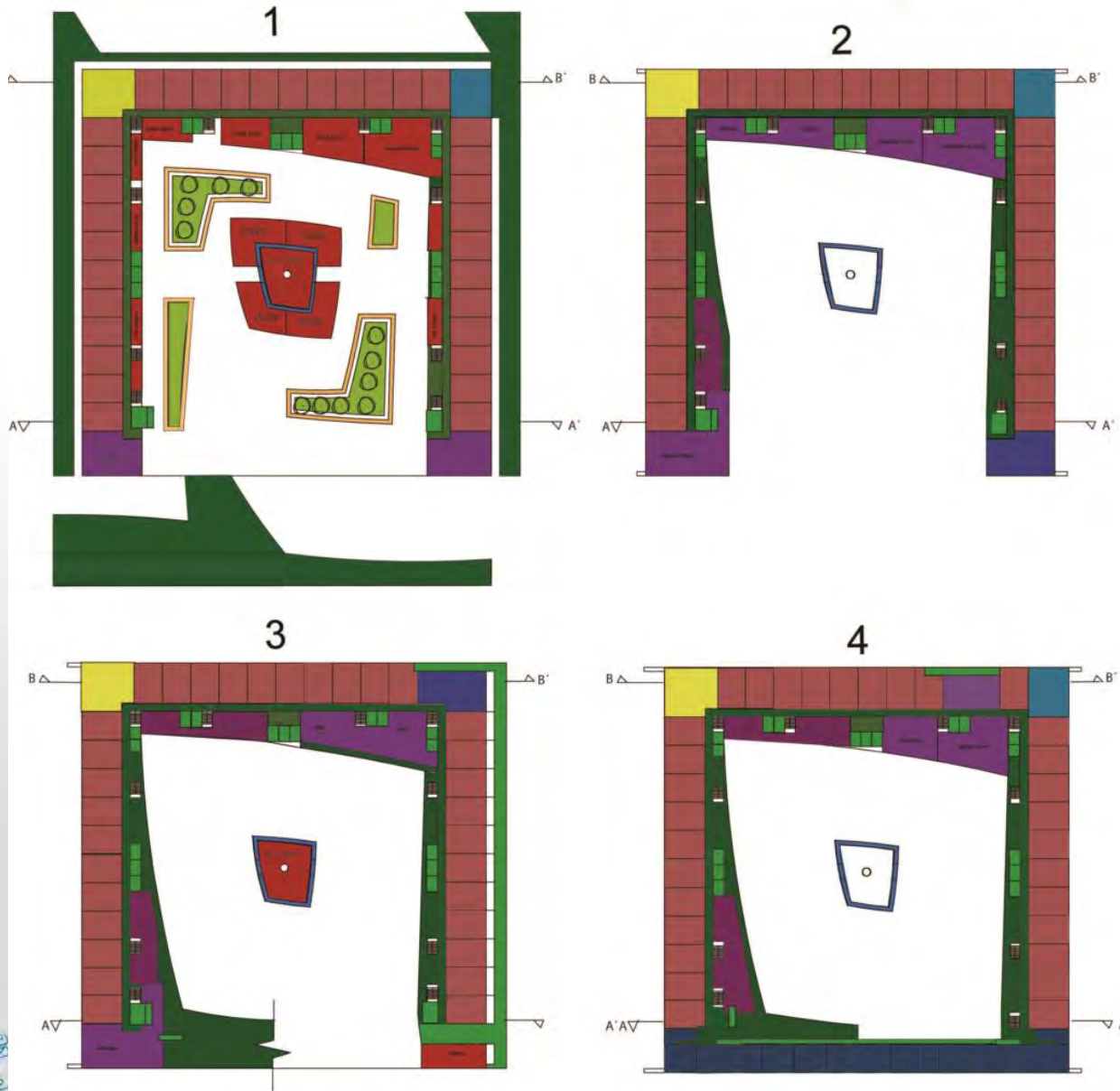


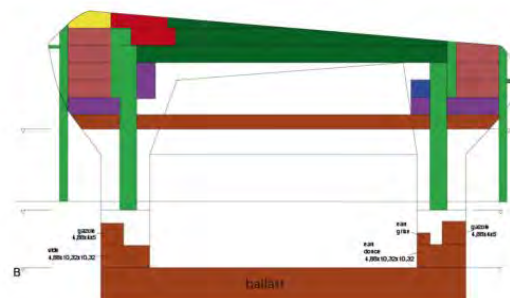
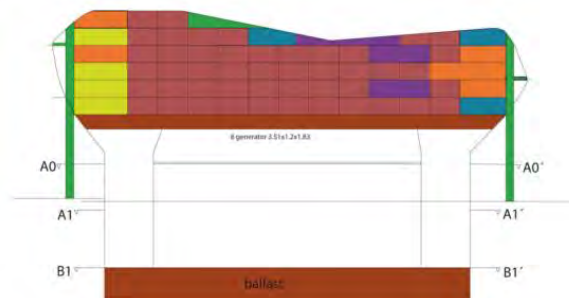
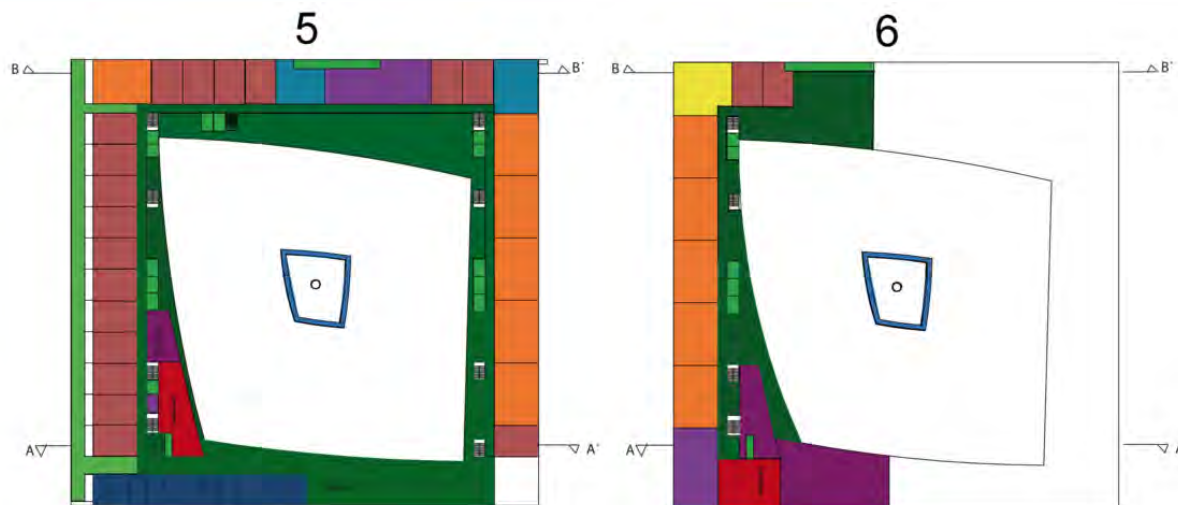


Typological Volumes

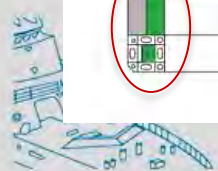
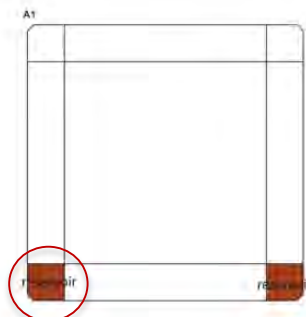


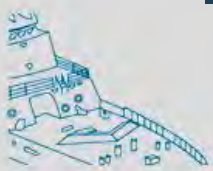
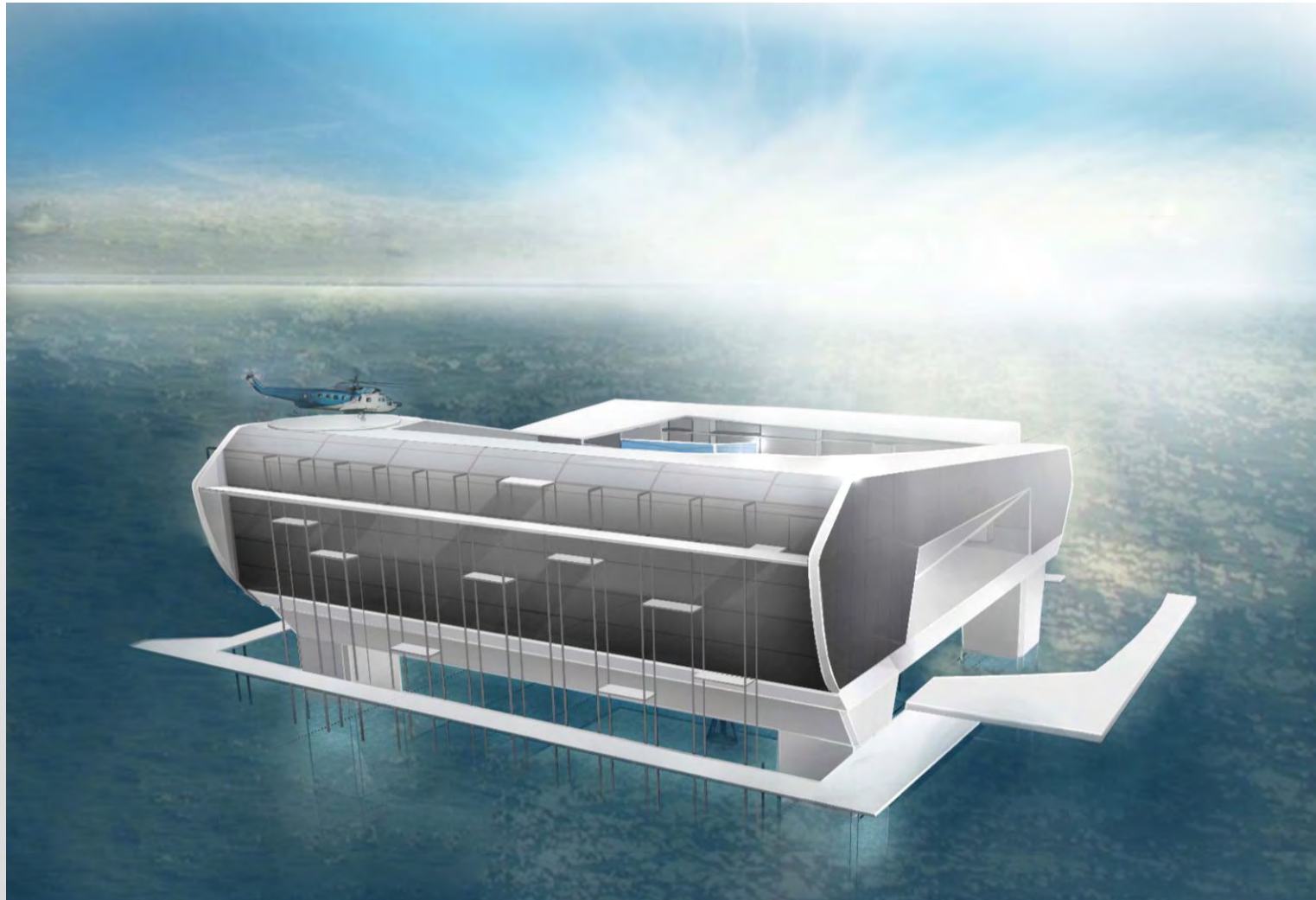
Rezone





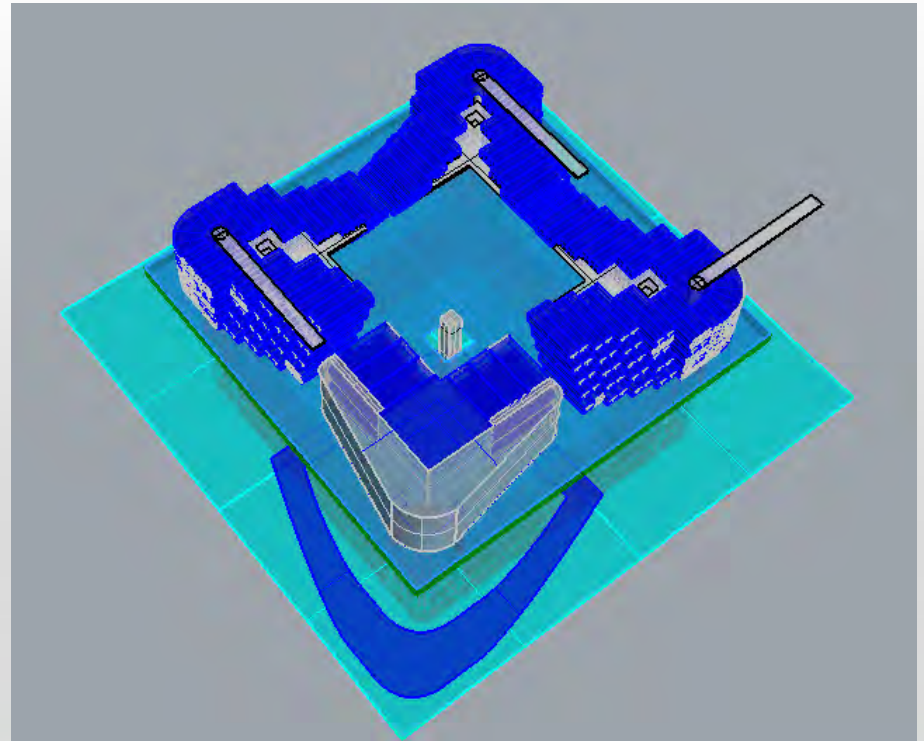
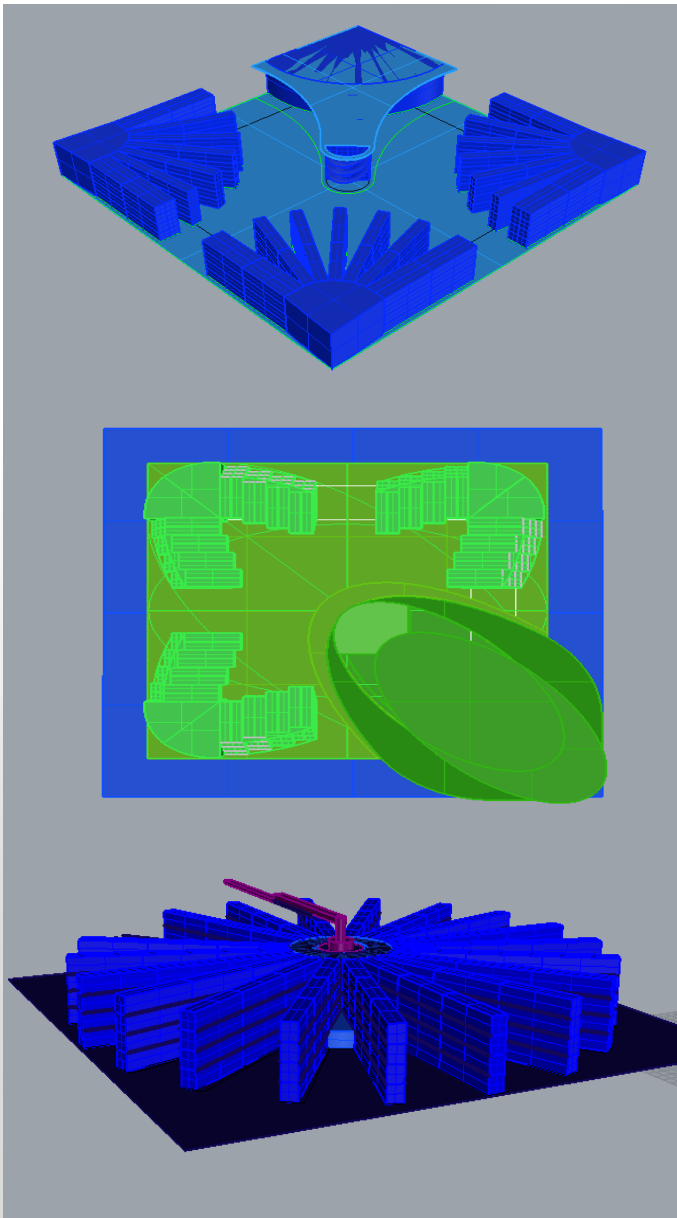
- Housing module type 1
- Housing module type 3
- Housing module type 5
- Housing module type 2
- Trade
- Equipments
- Circulation
- Permanence
- Hotel
- Technique space
- Ships parking





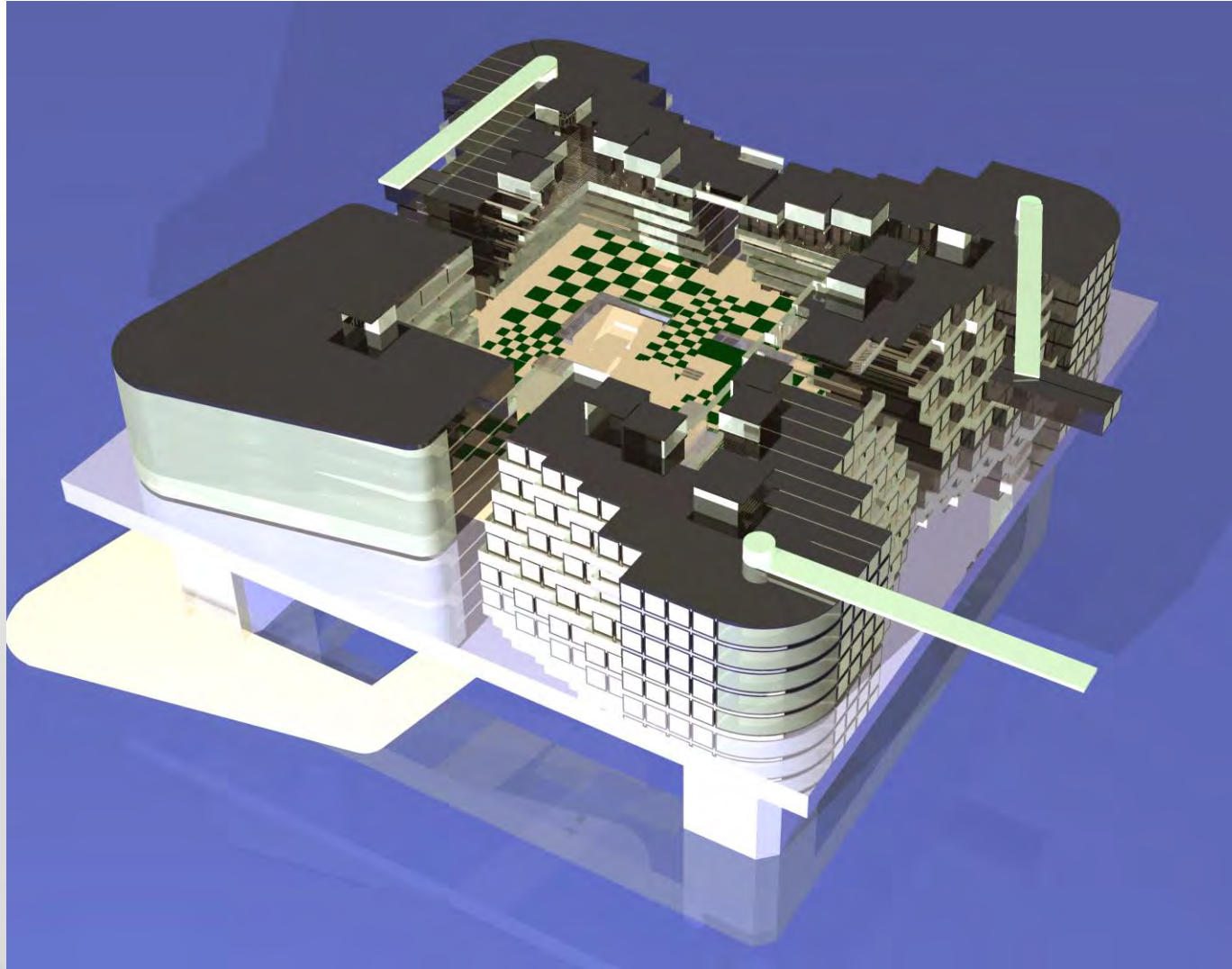


Decided



SEASTEAD

7500 square feet of harbor space, are available for water activities, sport, shipping, and passenger unloading.



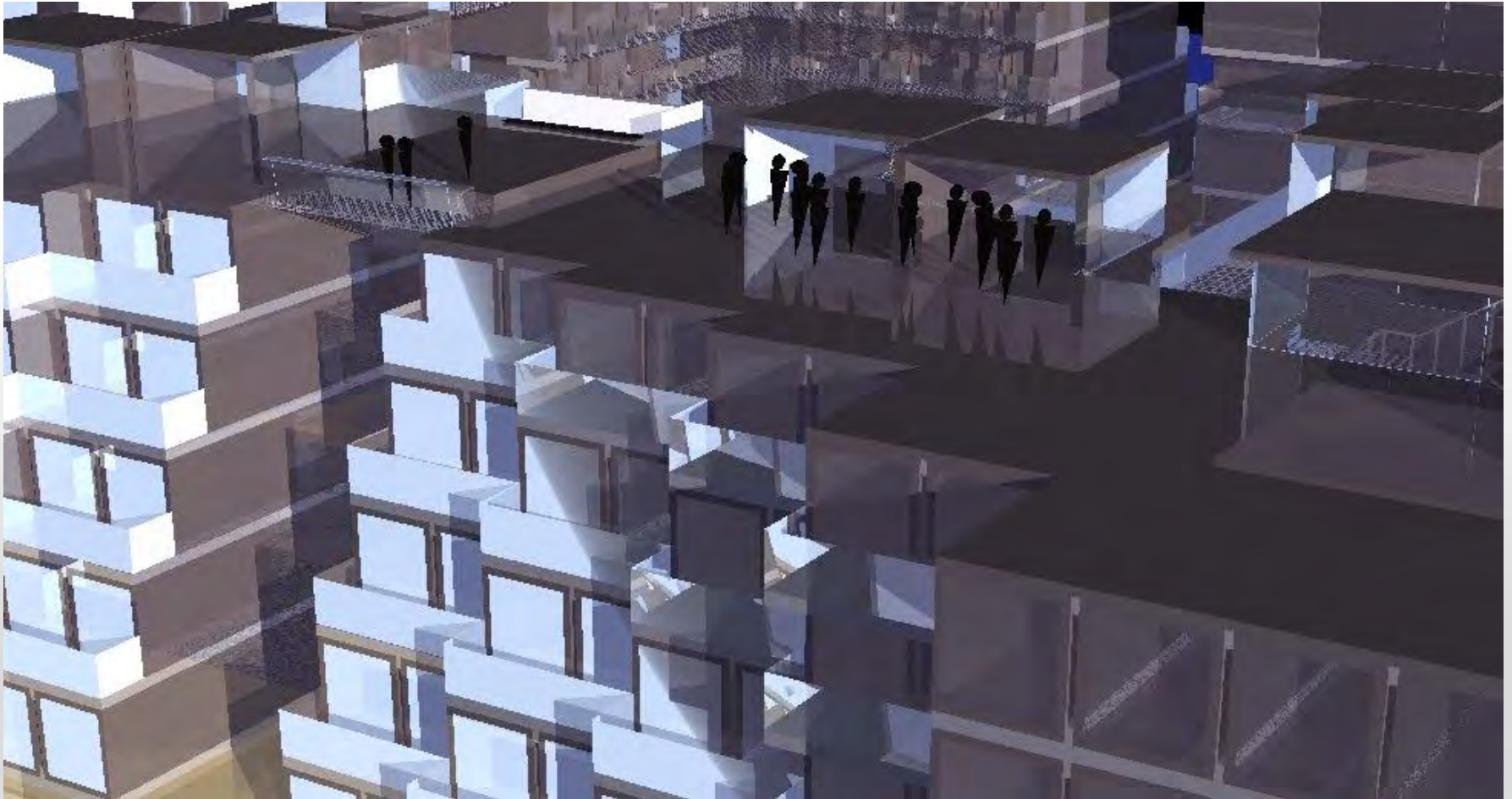
COMMERCIAL SPACE

Each corner of platform, adjoining the residential areas, is designated for shopping, a medical center, library, grocery store and other shop.



SOCIAL SPACE

Three open balconies. Lie on top of the roof



RESIDENTIAL SPACE

300 Shipping containers, each with area of 280 ft², take up the majority of the platform space.

TYPE 1

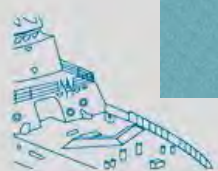


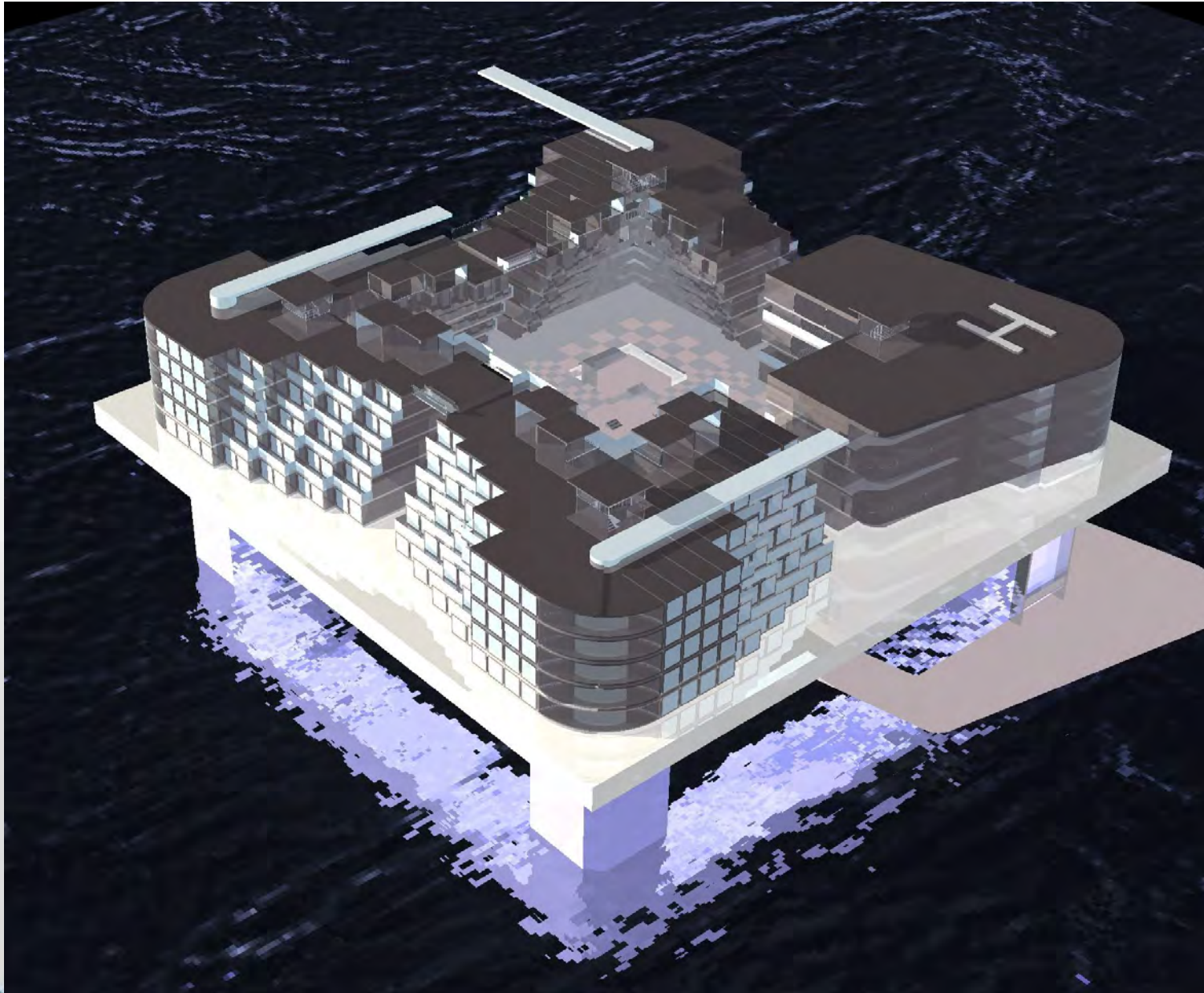
TYPE 2



TYPE 3



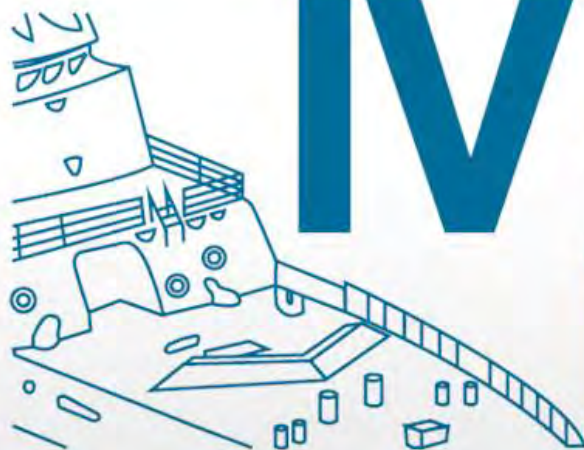




THANK YOU!

If you want to know more, please write to
linast00@gmail.com
Lina Suárez





CONGRESO INTERNACIONAL DE
IV DISEÑO E
INGENIERÍA
NAVAL

11 - 13 DE MARZO DE 2015