

HSE



HSE

**“A DIFFERENT APPROACH TO OFFSHORE LOGISTICS”**



## COLOMBIA











HARBOUR TOWAGE



FUEL DISTRIBUTION



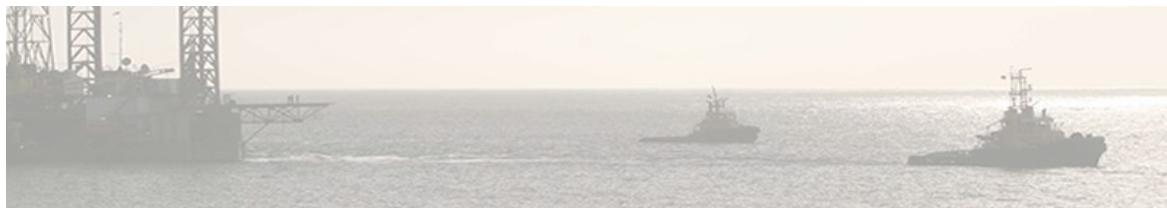
MARITIME TRANSP. & LOGISTICS



PORTS AND TERMINALS



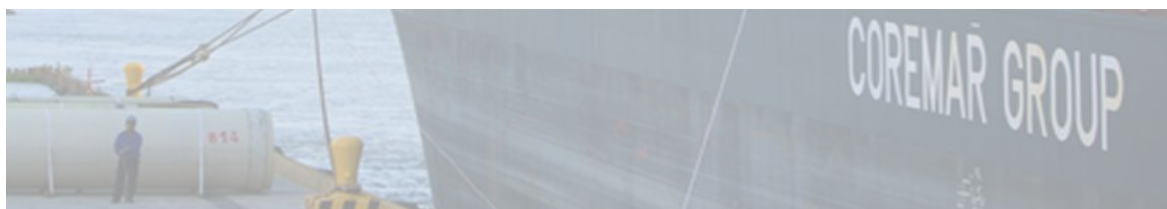
OFFSHORE



HARBOUR TOWAGE



FUEL DISTRIBUTION



MARITIME TRANSPORT DIVISION



PORTS AND TERMINALS



OFFSHORE DIVISION





LOGISTICS SOLUTIONS FOR THE ENERGY SECTOR IN THE SEAS OF LATIN AMERICA AND THE CARIBBEAN

AHTS - AHT - PSV - CREWBOATS - CHASEBOATS - BARGES

Logistics Support

Cargo Transportation

Anchor Handling

Personnel Transportation

International, National and Local Towage

Contingency, Rescue and Salvage

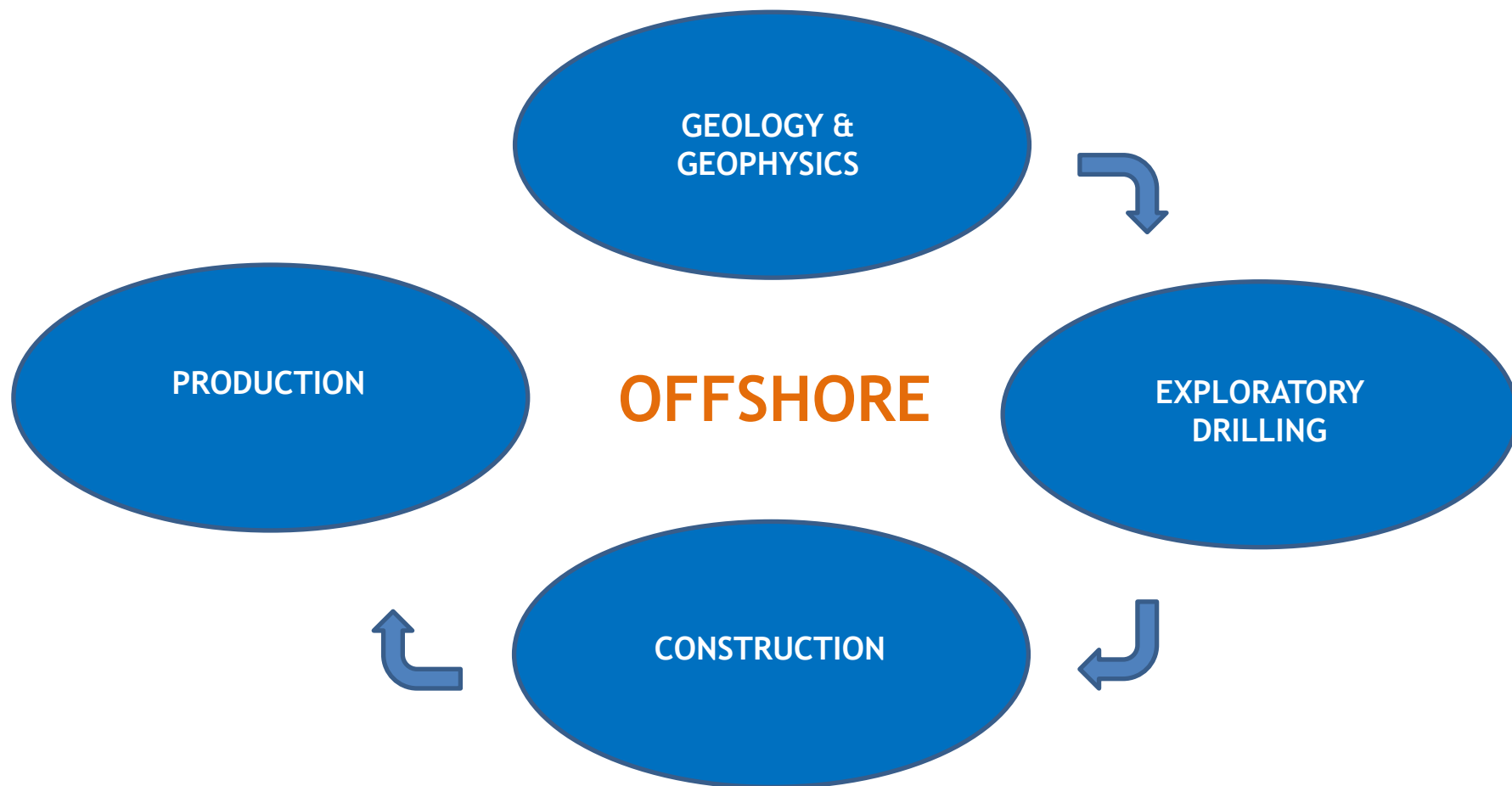


enap sipetrol

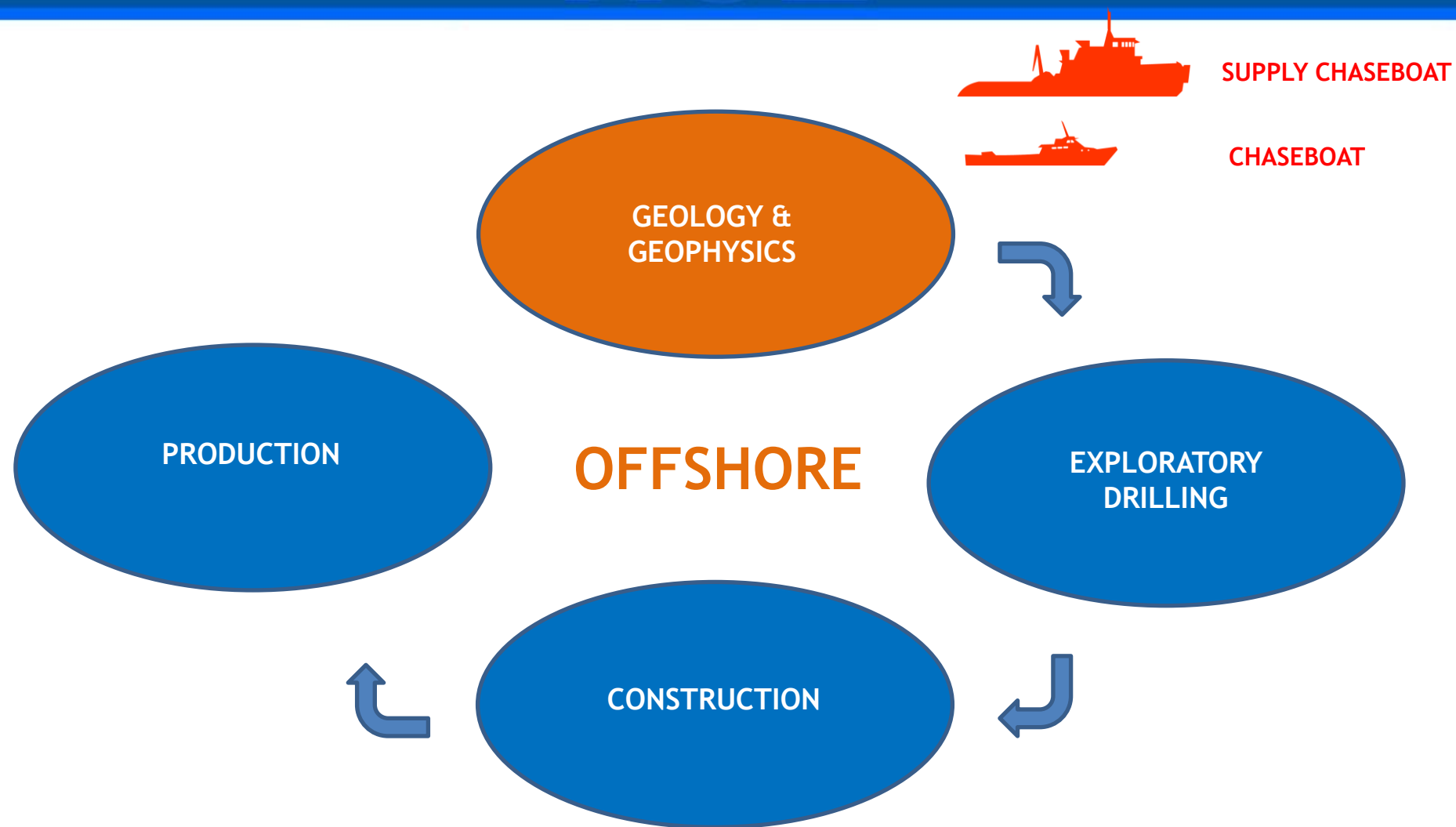


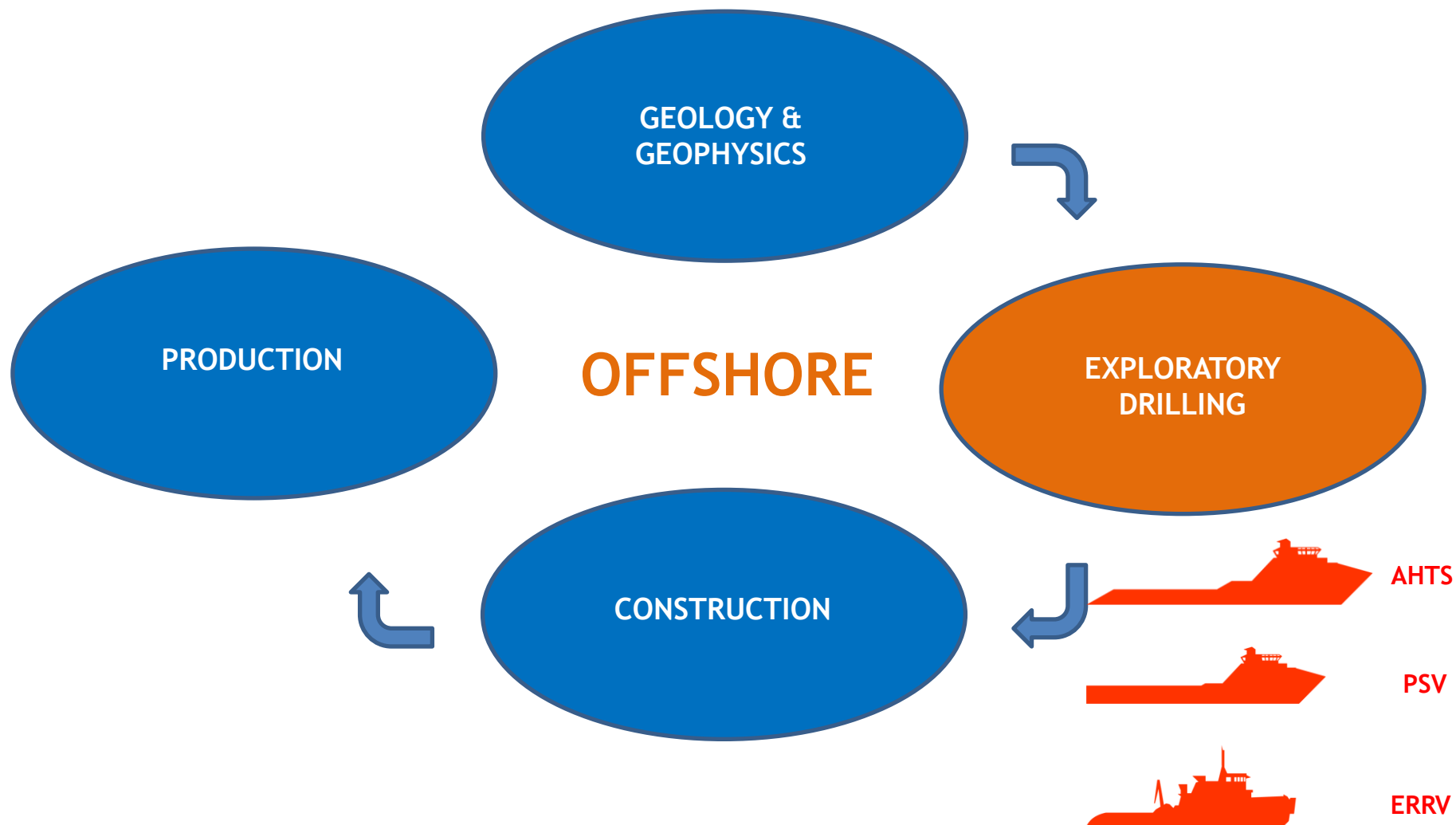
PETROBRAS



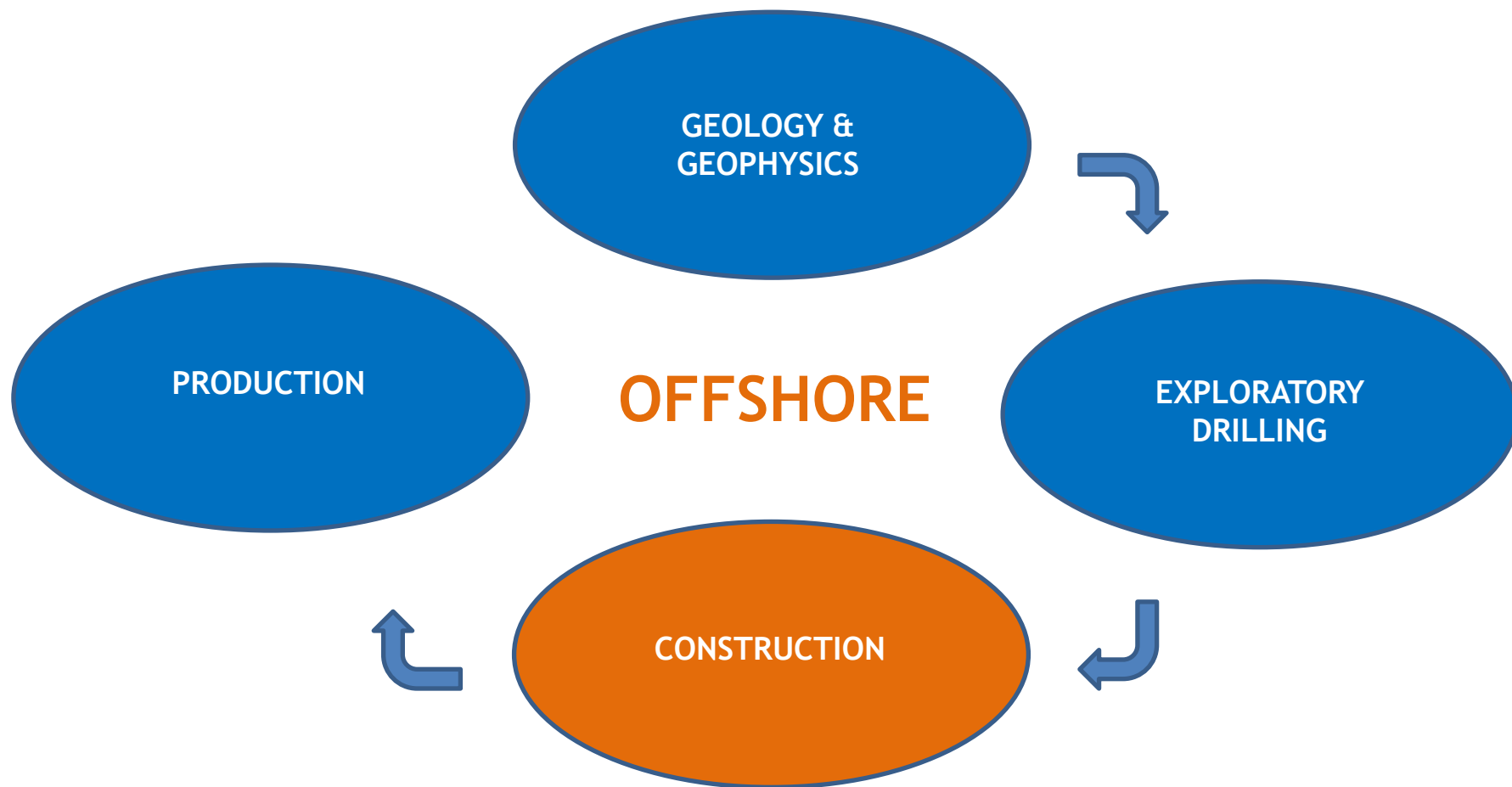












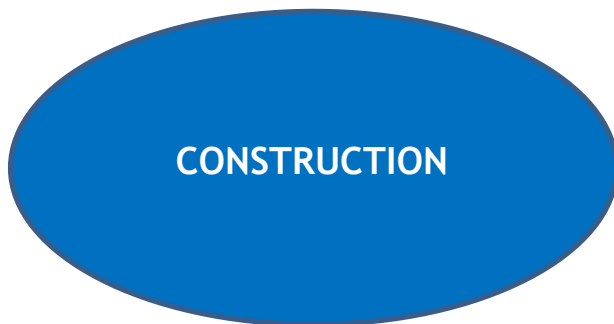
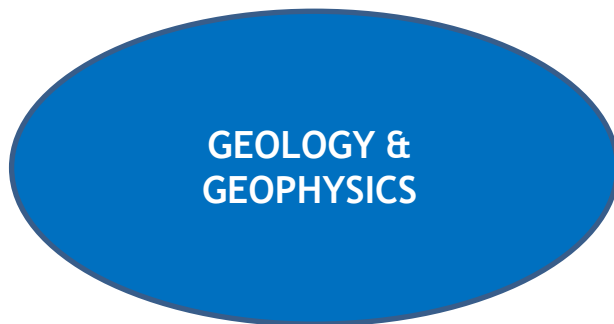
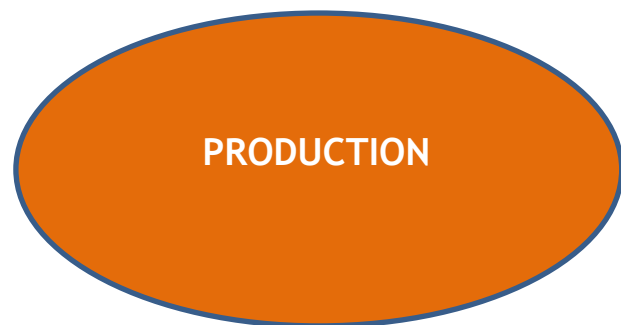
AHTS



CREW BOAT

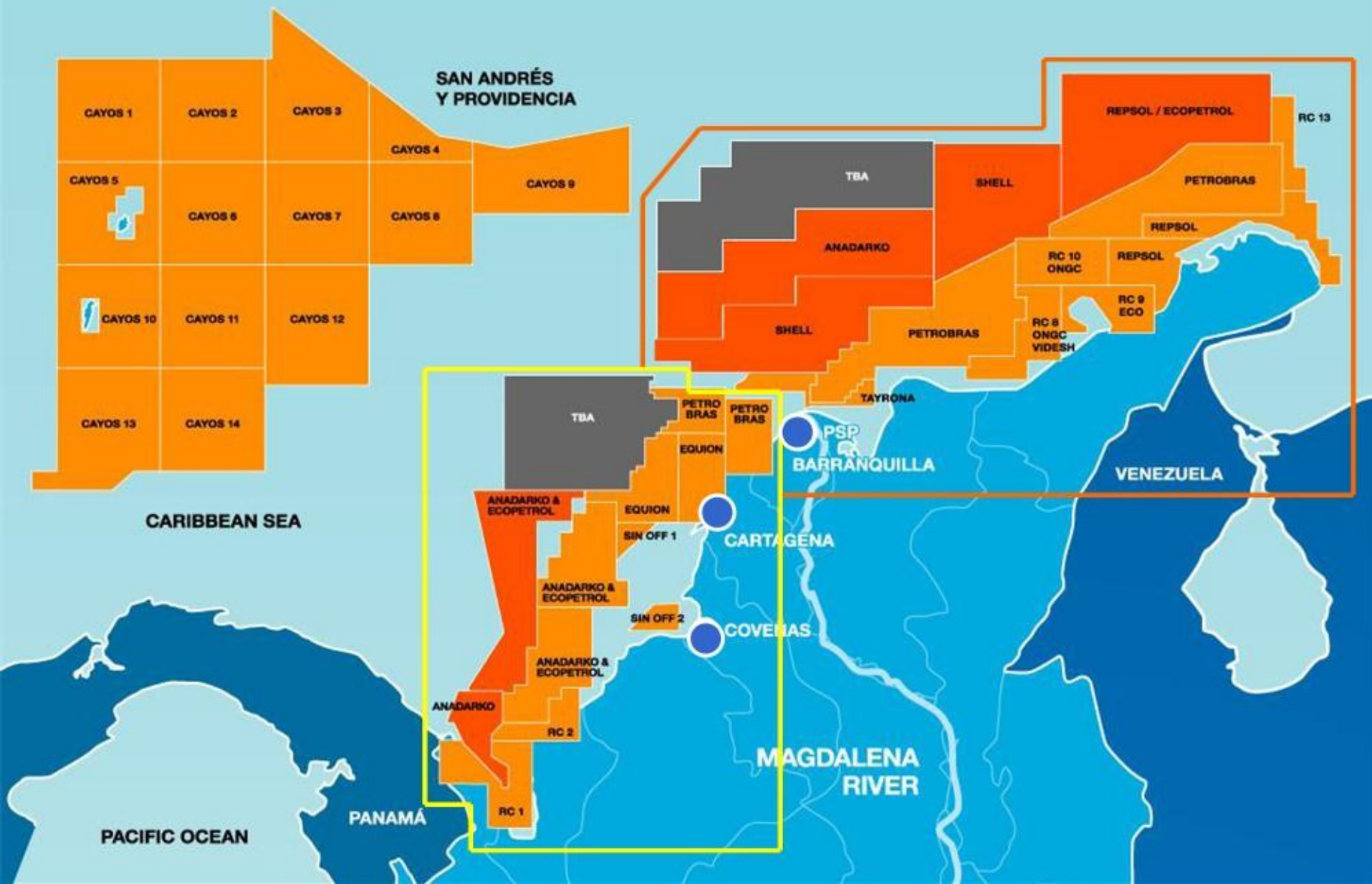


ERRV



OFFSHORE





**SHORE BASE - WELL DISTANCES**

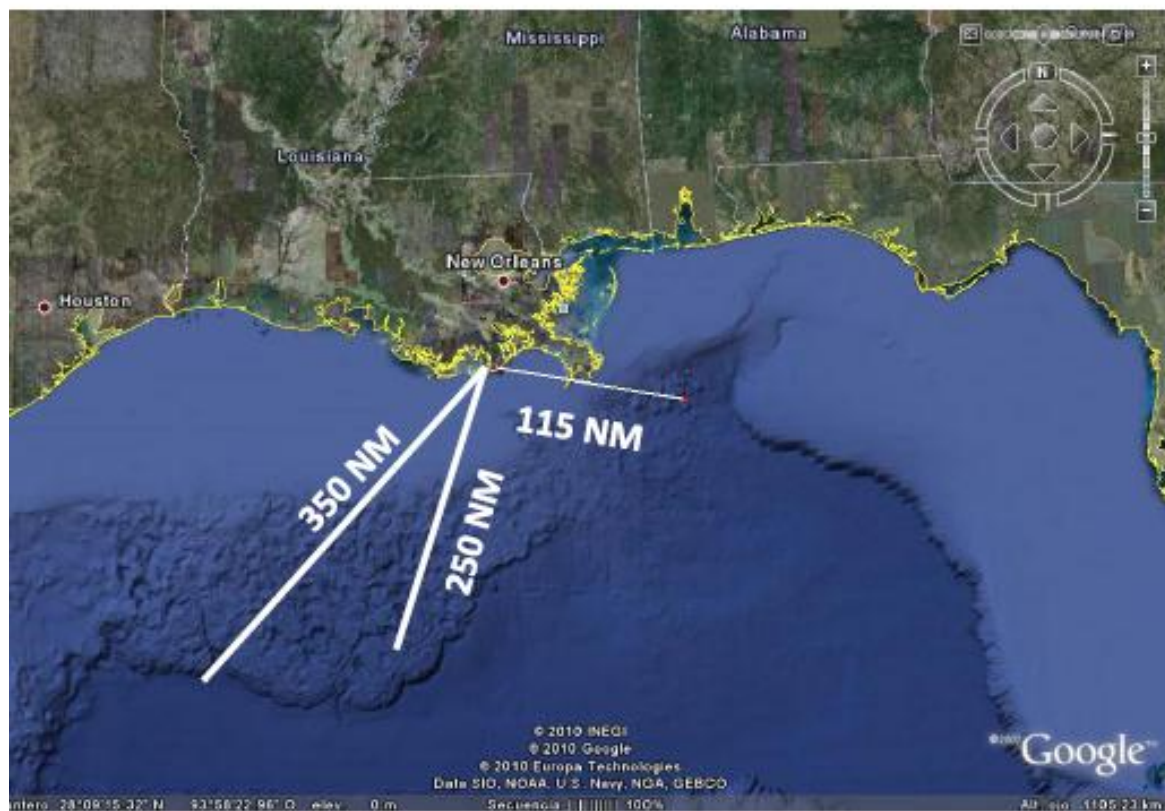
**VS**

**SHORE BASE - LOGISTICS SOLUTIONS**





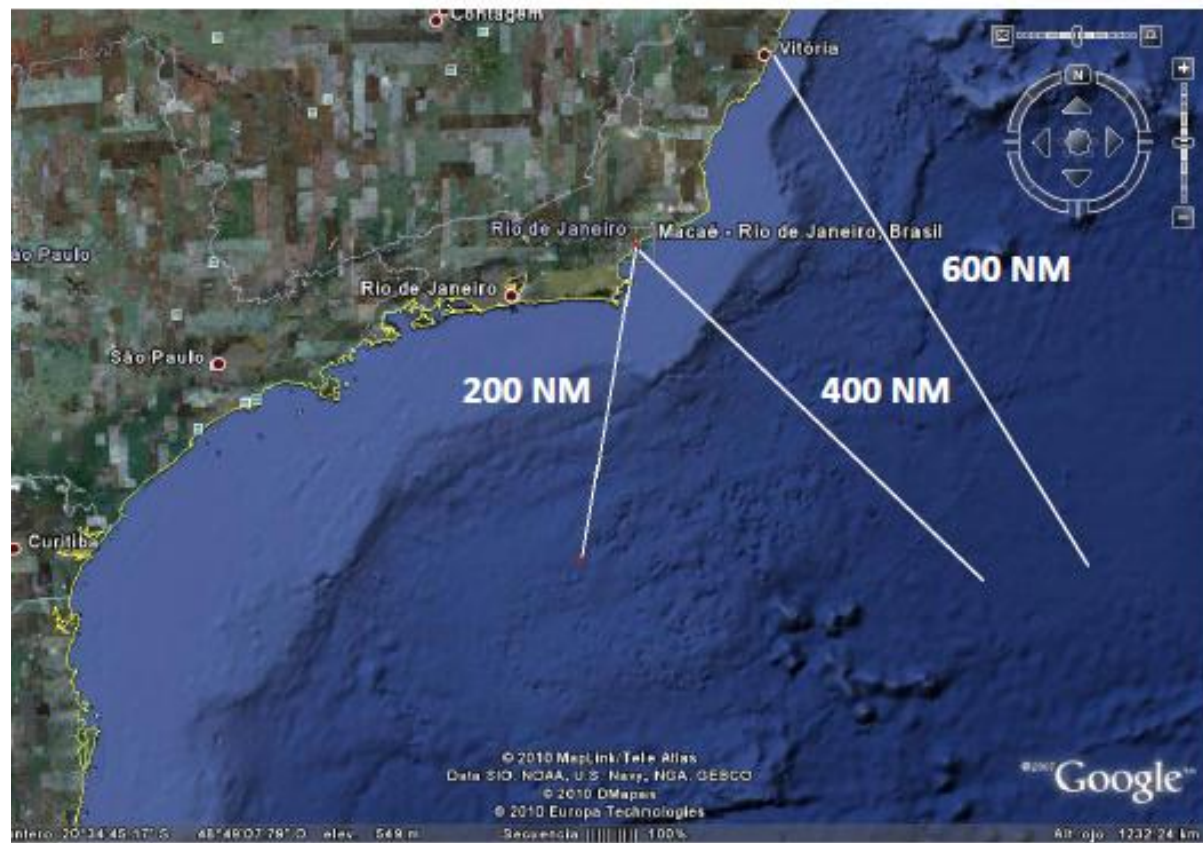
USA

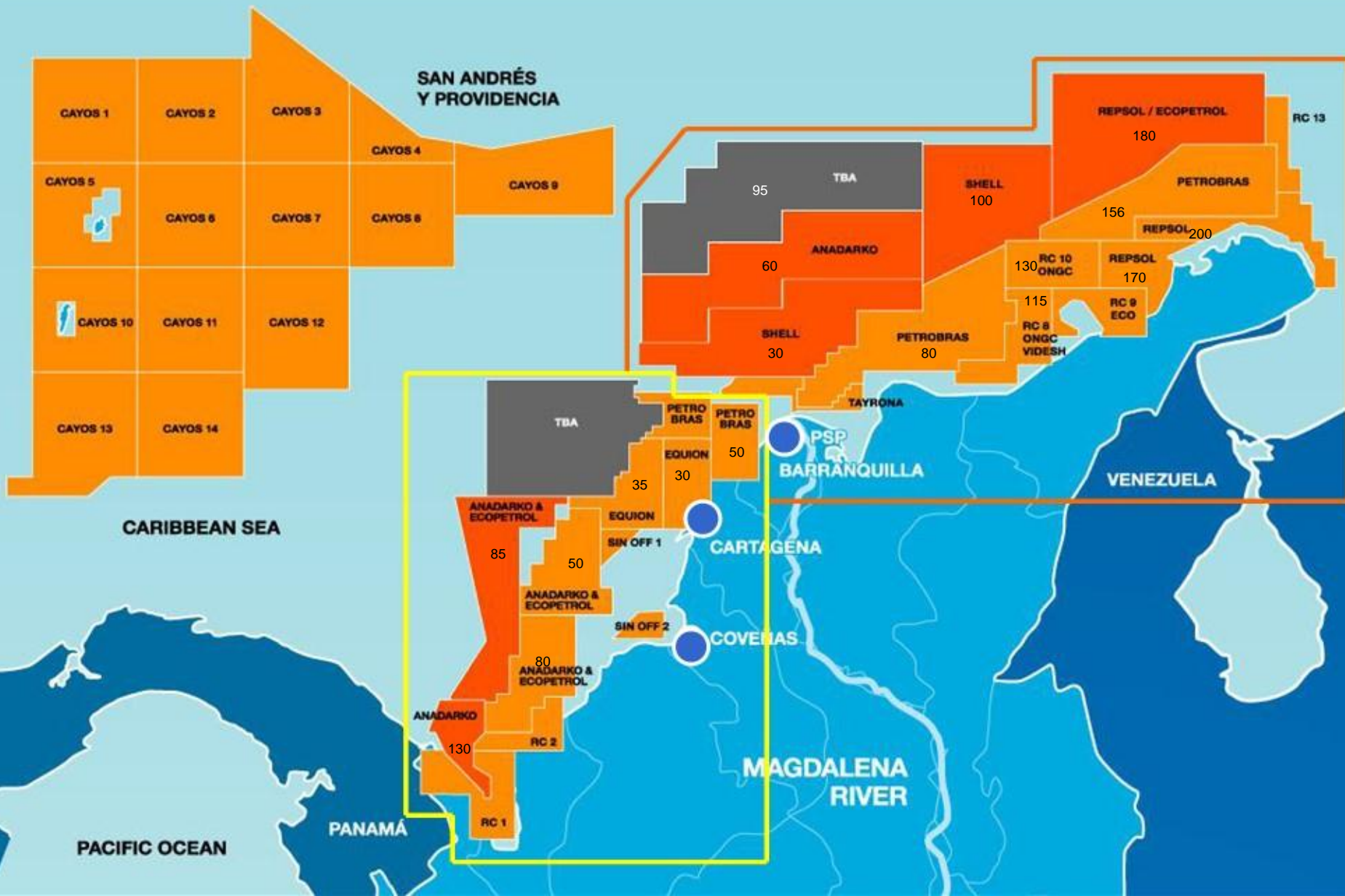


**PORT FOURCHON SERVES 90% OF ALL EXPLORATORY WELLS IN US GULF**



**BRAZIL**













BARRANQUILLA













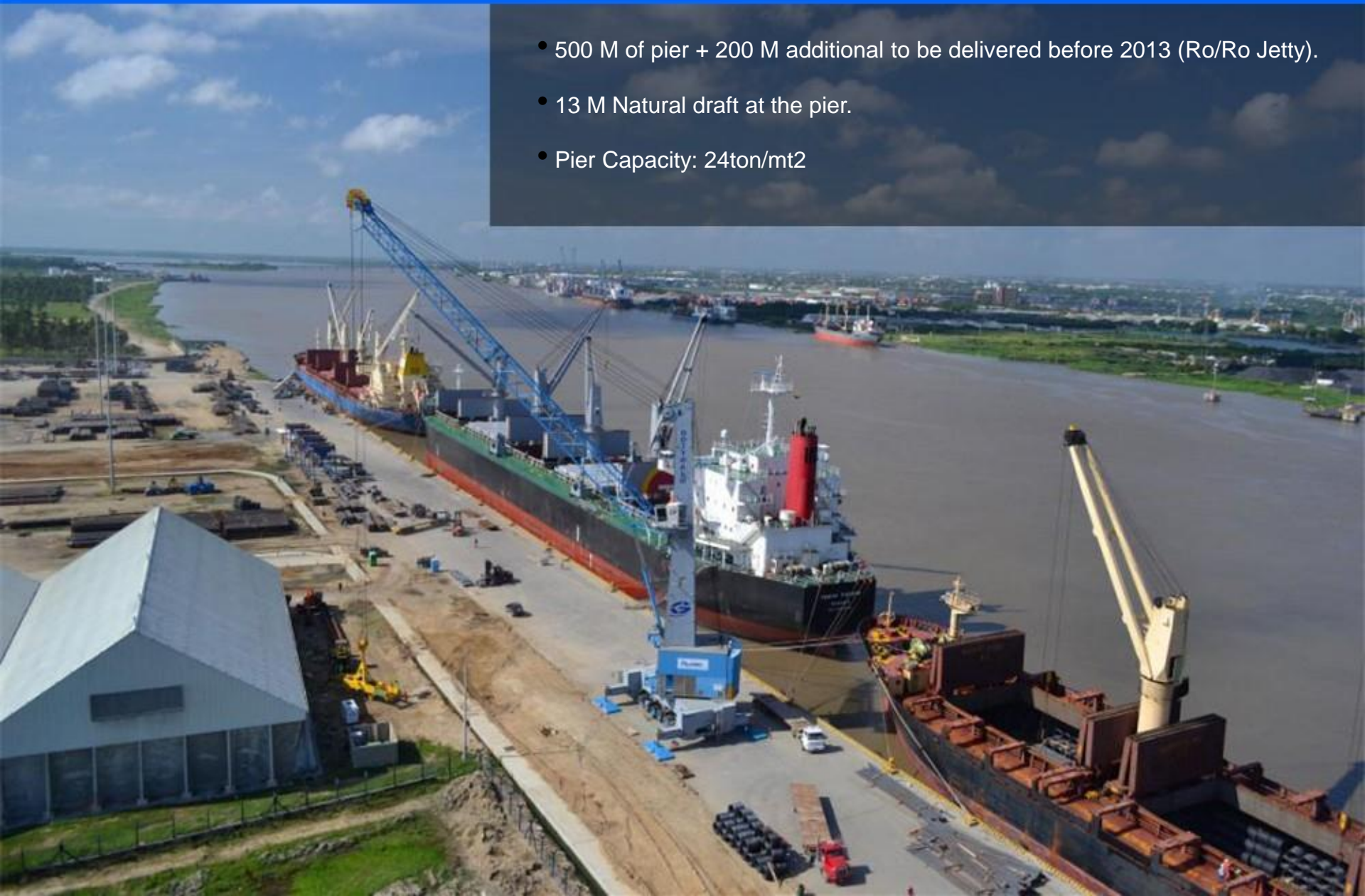
PALERMO PORT SOCIETY  
(42 HECTS)

PETROCHEMICAL PARK  
(40 HECTS)

INDUSTRIAL PARK | FREE TRADE  
ZONE (90 HECTS)

TOTAL OF 172 HECTS

- 500 M of pier + 200 M additional to be delivered before 2013 (Ro/Ro Jetty).
- 13 M Natural draft at the pier.
- Pier Capacity: 24ton/mt2







### HYDROCARBONS AND DERIVATIVES STORAGE TERMINAL

- LIQUIDS TERMINAL FOR TANKERS AND BARGES.
- 2 MILLION BLS STORAGE CAPACITY.
- RECEIPT AND DELIVERY OF LIQUIDS OPERATION (BY RIVER AND GROUND).

### HYDROCARBONS ZONE

- STRATEGIC LOCATION WITH CLOSE ACCESS TO LIQUIDS AND MULTIPURPOSE TERMINAL.
- INDUSTRY RELATED TO MINING AND ENERGY SECTOR.



### INDUSTRIAL PARK: 90 HCT

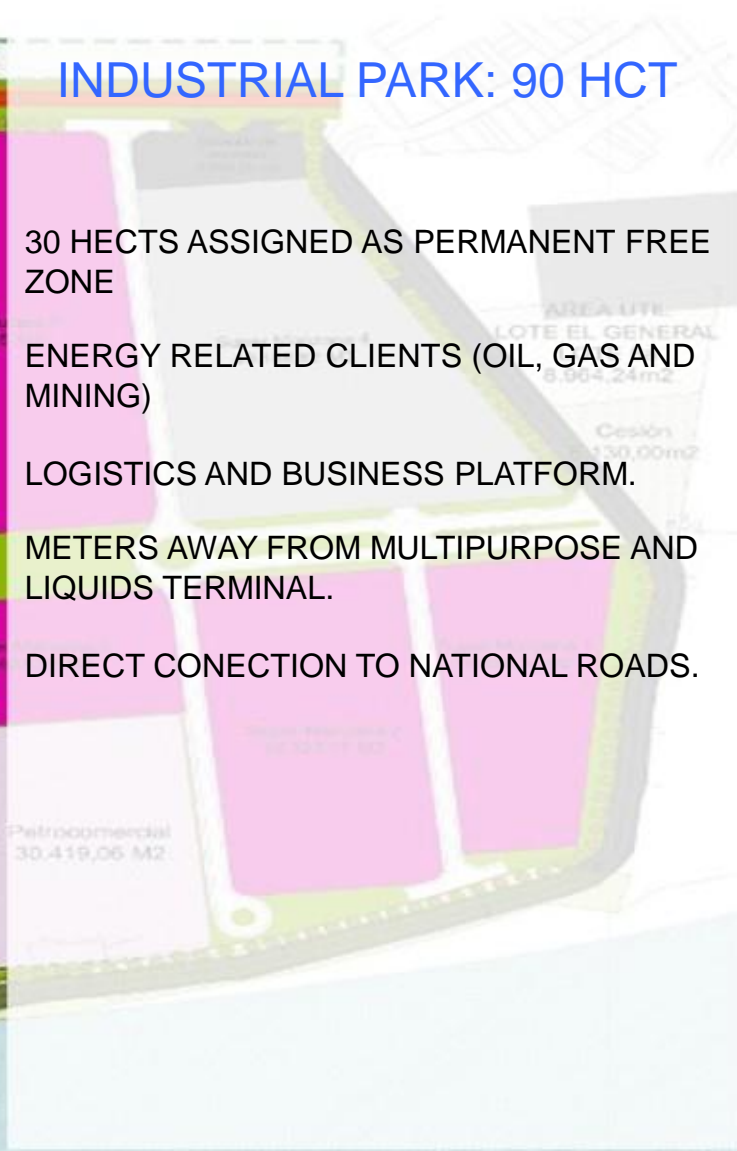
30 HECTS ASSIGNED AS PERMANENT FREE ZONE

ENERGY RELATED CLIENTS (OIL, GAS AND MINING)

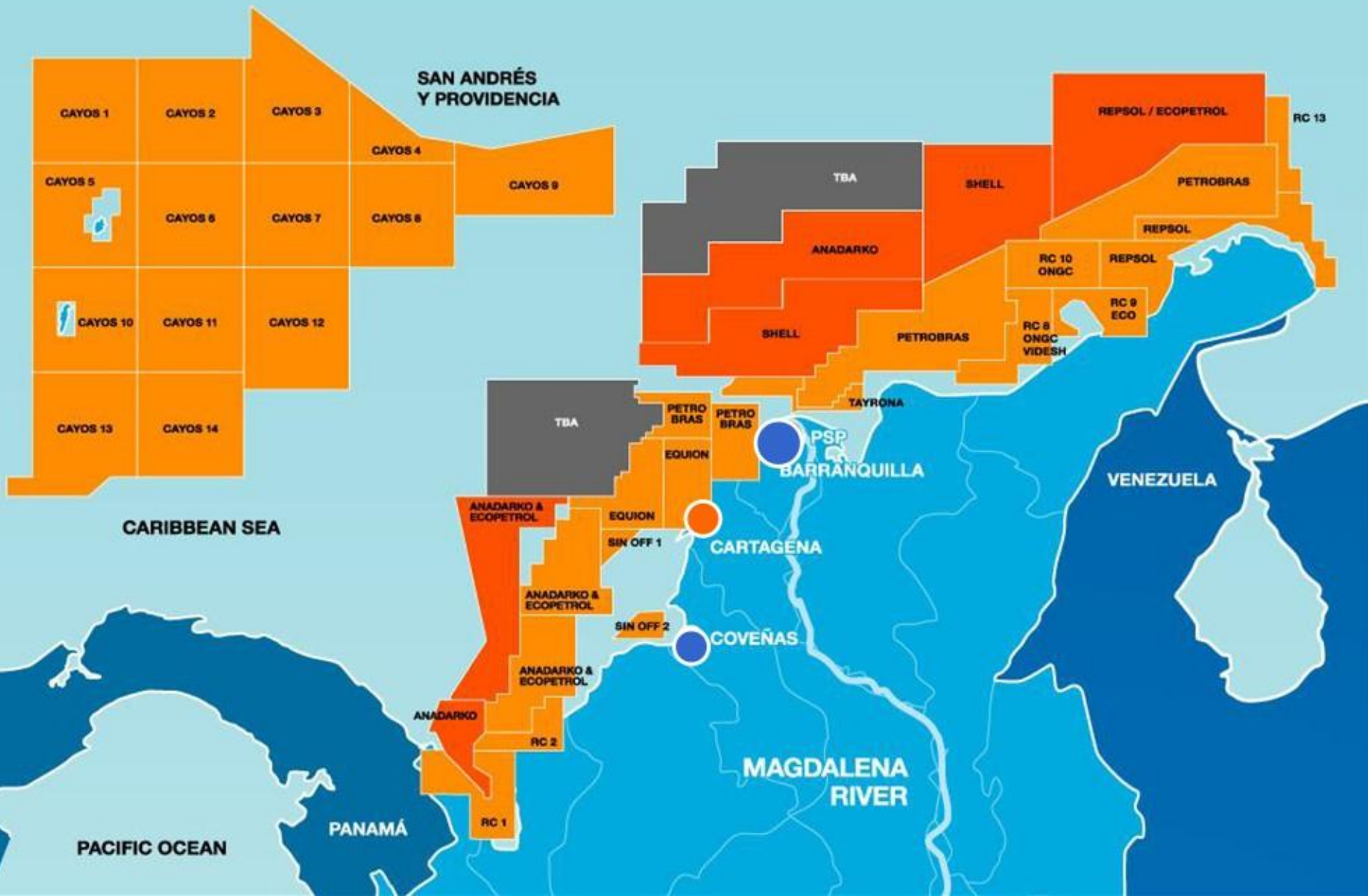
LOGISTICS AND BUSINESS PLATFORM.

METERS AWAY FROM MULTIPURPOSE AND LIQUIDS TERMINAL.

DIRECT CONECTION TO NATIONAL ROADS.









CARTAGENA







30,000 SQM



AERIAL VIEW | MAY 2011





3D IMAGE

  
**TAYRONASHOREBASE**  
UNION TEMPORAL





GENERAL VIEW | JULY 2012



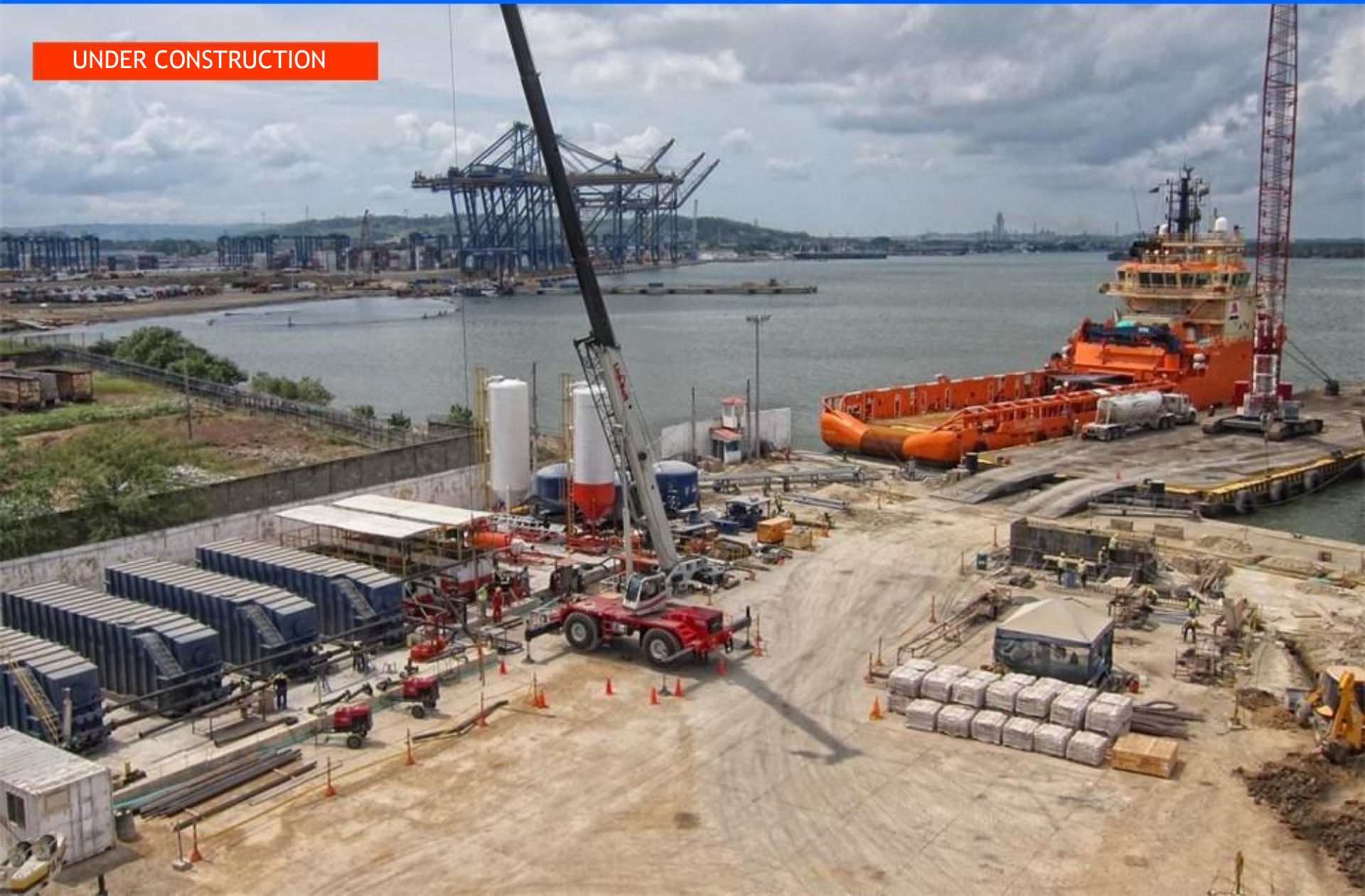


### OFFICES





UNDER CONSTRUCTION



### WATER TANK





### PIPE YARD AND WAREHOUSE





### WAREHOUSE





### MUD/CEMENT PLANT





### AHTS AT THE PIER



### AHTS AT THE PIER





### GENERAL VIEW | JULY 2012

- 1) Wharfage
- 2) Mud and cement plants
- 3) Water tank
- 4) Office building for 55 people
- 5) Infirmary
- 6) 2.100 m<sup>2</sup> Warehouse
- 7) Temporal Waste Storage
- 8) 7.600 m<sup>2</sup> Casing storage yard
- 9) Pre stowage zone



**GENERAL VIEW | ADDITIONAL AREA**







**25  
Simultaneous  
operations**

**327 men  
working  
the same  
day**

**+30,969  
people  
entered to  
the base**

**430.000  
Man working  
hours**

**344 days  
without  
accident**







COVEÑAS











